

Need Project Report

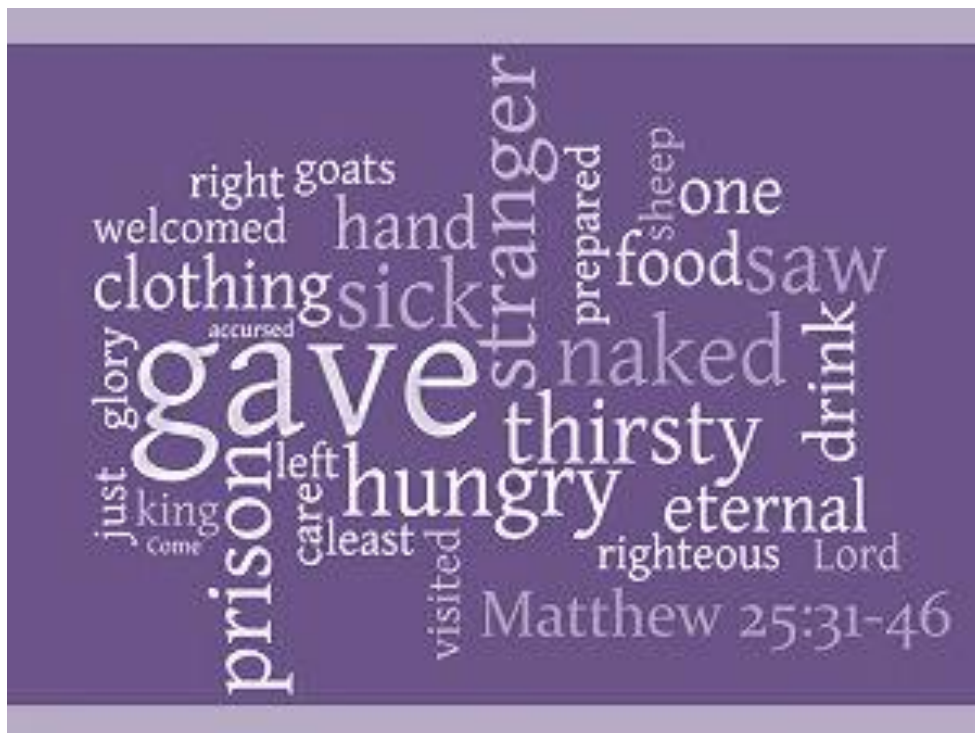
April 2015



"I was hungry and you gave me something to eat"

[Matthew 25:35]

Serving Jesus in His most distressing disguise



Purpose

This report has been compiled to provide our supporters and referral agencies an overview of the extent and growth rate of the project, and demonstrate the public benefits of this project

The information provided maintains our clients confidentially, but does reveal the shocking statistics on the levels of food poverty we with your support are seeking to address across our region.

Who we are

The Need Project Central Bedfordshire exists to provide a Christian response for people in our communities who are facing various situations of need.

The project is overseen as a Charitable Incorporated Organisation and run by members of five “hubs”; Kings Baptist Church Stotfold, Flitwick Baptist Church, Sandy Baptist Church, Shefford Baptist Church and Marston Vale Community Church.

We respond to situations of need via confidential referrals processes from multiple agencies and care workers across central Bedfordshire.

All our delivery teams are DBS checked, approved by the leadership teams of the partner churches and have signed confidentiality agreements.

Our objectives

To relieve persons in Central Bedfordshire and the surrounding area that are in poverty or financial hardship in such ways as the Trustees from time to time think fit, in particular, but not exclusively by:

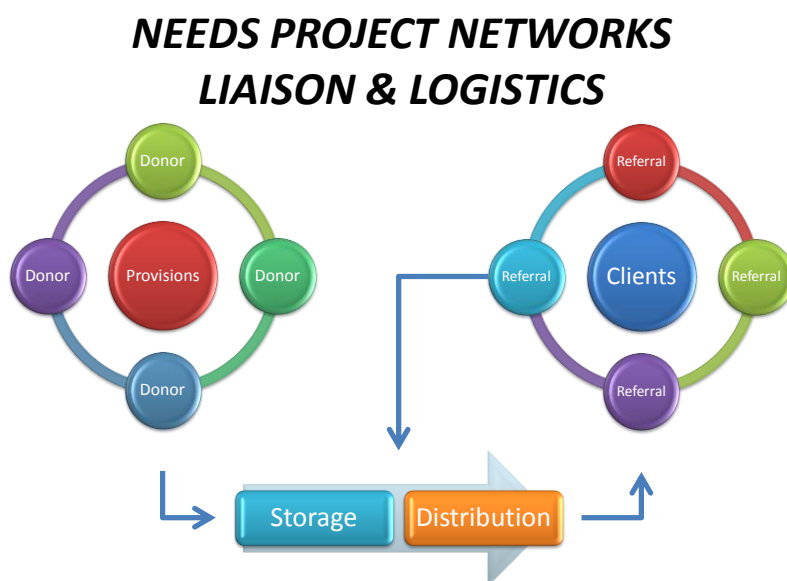
1. Providing food parcels to support individuals and families who are experiencing food deprivation.
2. Providing other items to meet immediate and essential needs, as resources allow.
3. Developing other forms of support to meet immediate need and alleviate financial hardship.

Our values

We are a Christian organisation motivated by Jesus' teaching on poverty and injustice. We operate according to Christian principles of compassion, honesty, integrity, openness, kindness and care of all people, regardless of backgrounds or beliefs (or none). We are passionate about inclusion and being non-judgemental is central to what we do. We believe that everyone has the right to have food on their plate, dignity, skills, a chance to work and hope for the future.

How we operate

The Need Project has a system of networks that have been developed as the project has grown. We rely on the network of donors who generously support the project with food and funds, and the network of care workers and agencies that connect us with hungry people who we bring your food too.

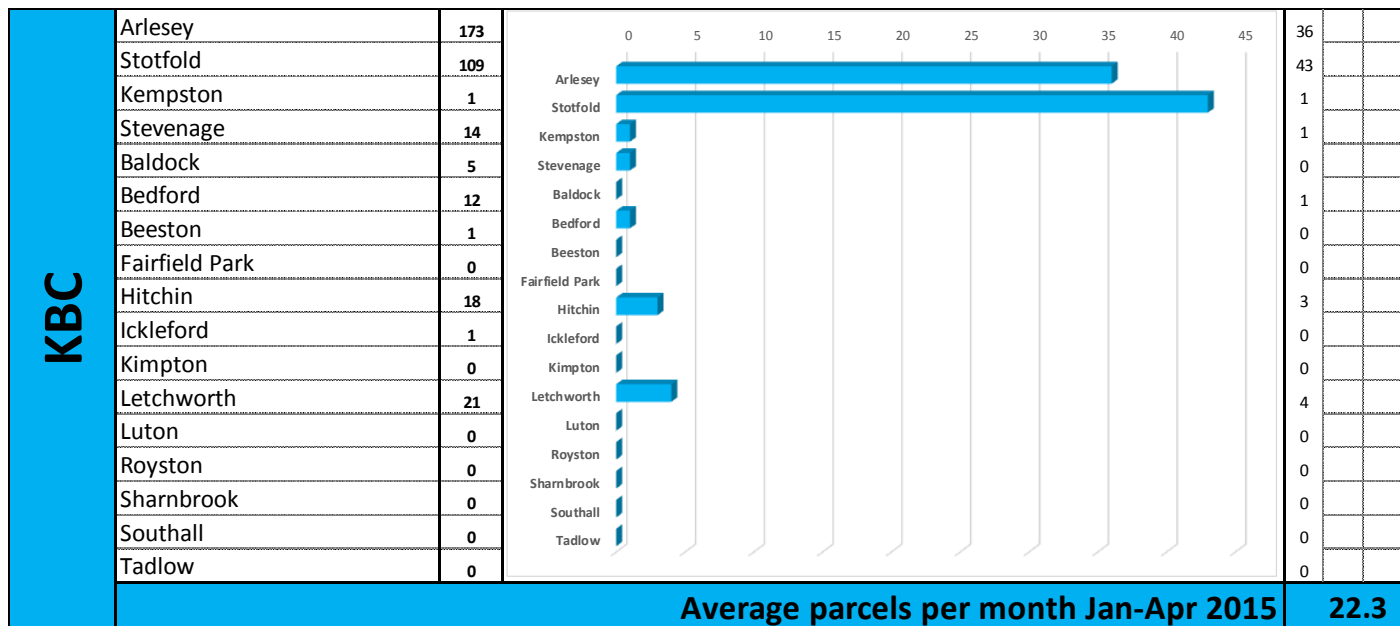


Hubs & News

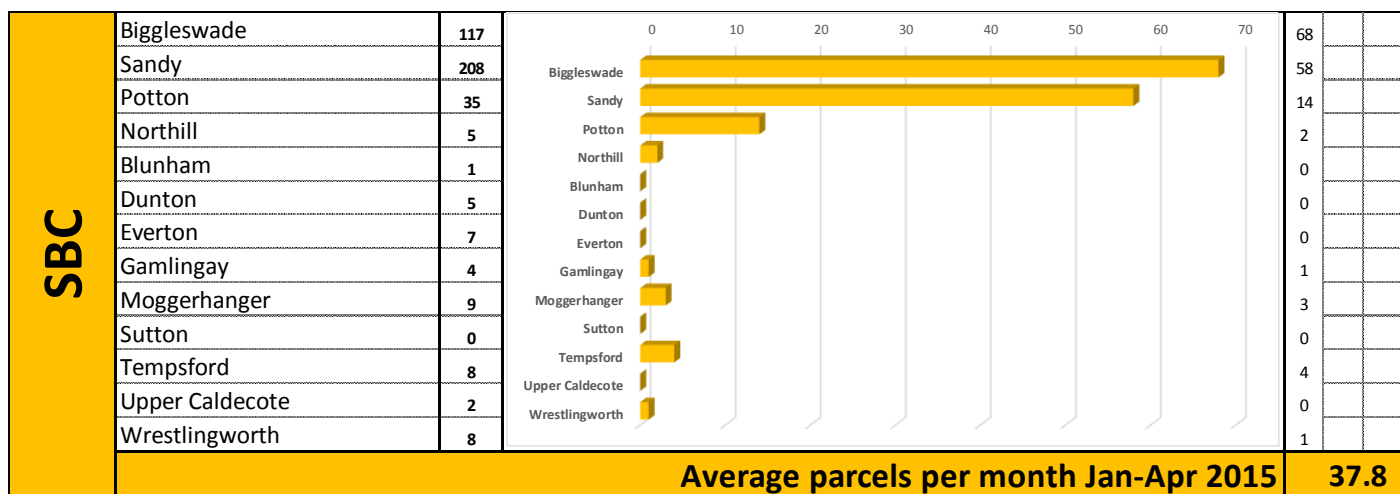
We have five hubs in operation so far. The central hub is King's Baptist Stotfold where all the referrals come into and are logged and then sent out to the nearest local hub for action.

Communities Served By Each Distribution Hub

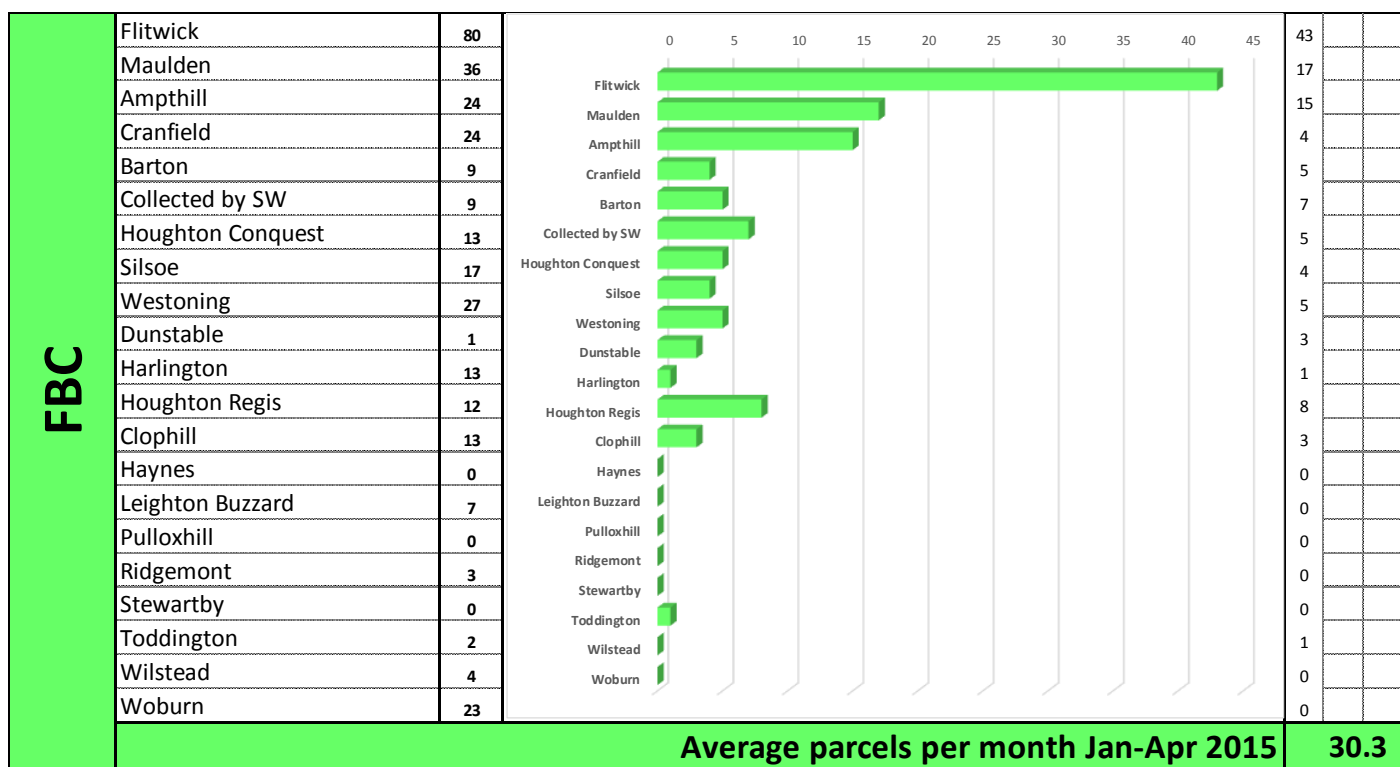
Stotfold



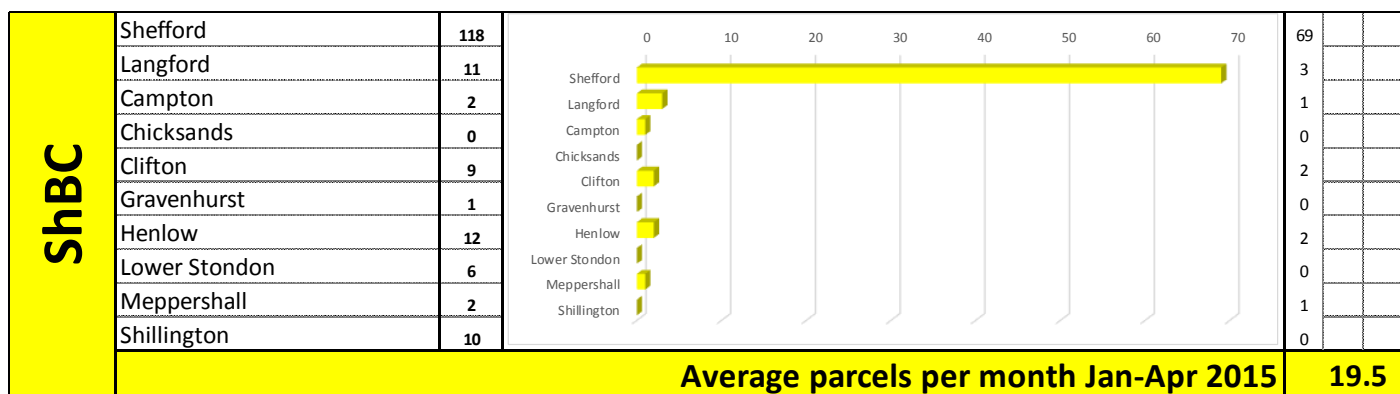
Sandy



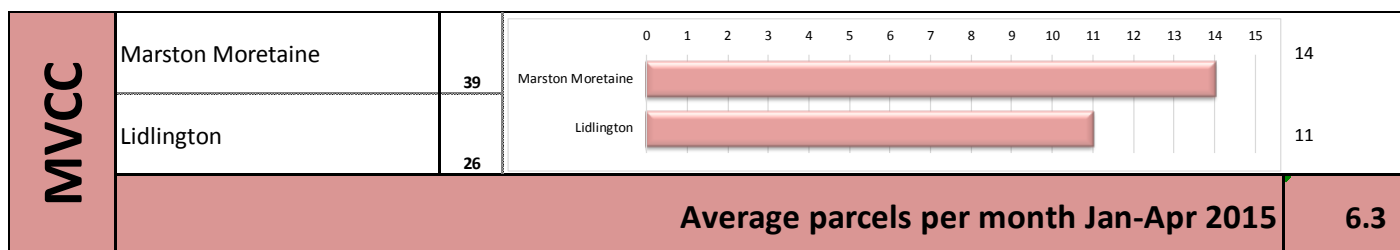
Flitwick



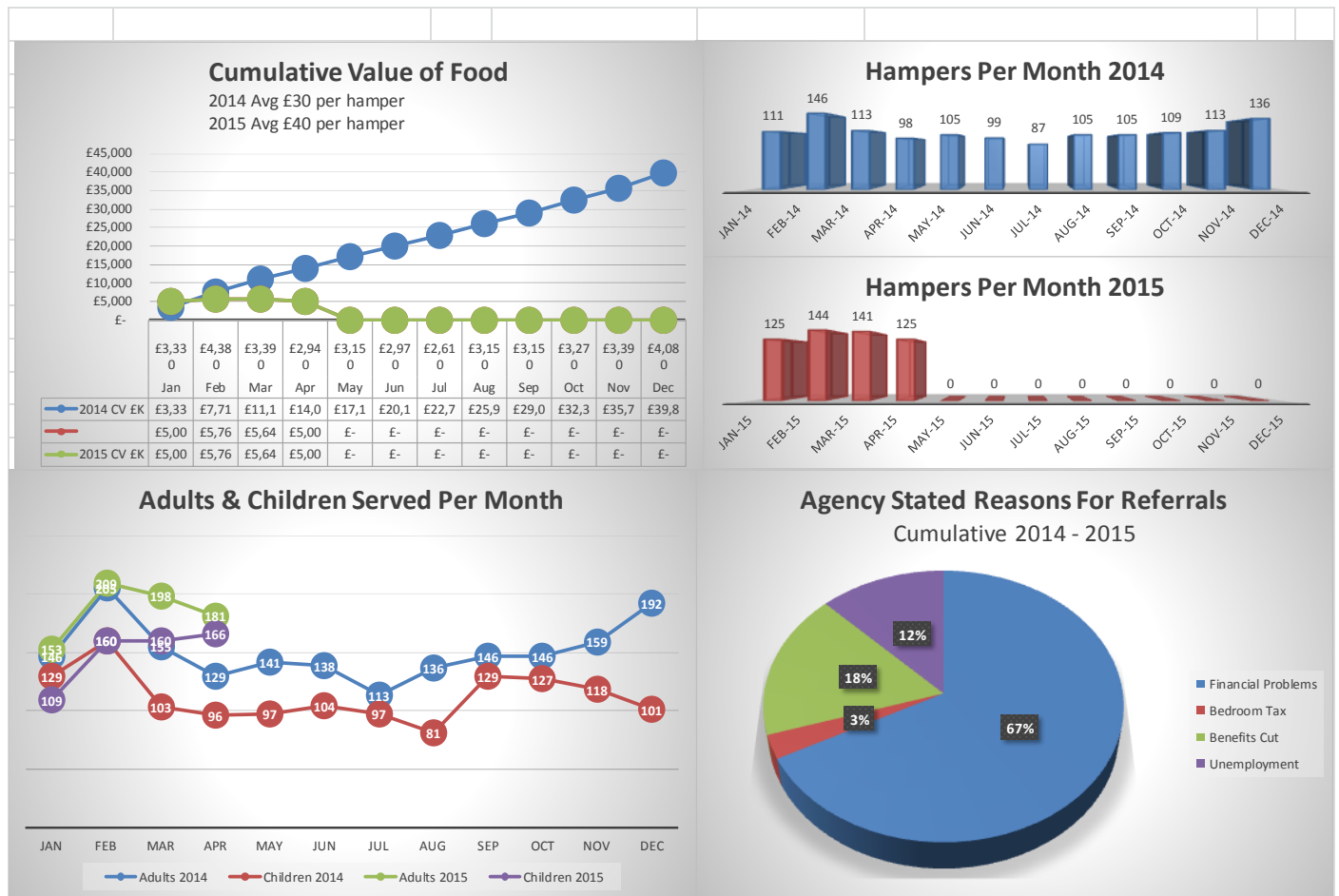
Shefford



Marston Vale Network



Statistics



The trends show an average 16% increase since 2014

Furniture

- Double Beds x 2
- Sofa-bed x 1
- Coffee Tables x 1
- Chest of drawers x 3
- Fridge x 1
- Travel system x 1
- Cot-bed & new mattress x 1
- Hoovers x 2
- Cooker x 1
- Moses basket & stand x 1
- Play mat, steriliser, highchair, baby bath, x 1 each
- Cups, plates, cutlery – various amounts
- Toaster x 3
- Kettles x 2
- Lamps x 4
- Mirrors x 3
- Bedding Sets x 2
- 3 piece suit x 2
- Microwave (new) x 2
- Stereo system X 1
- Book cases x 2
- Sofa x 2
- Single mattress x 1
- Ironing board and iron x 1
- Towels x 6
- Car-seat x 1

Please pass this report on to anyone who would be interested in the work of the Need Project.

You can contact The Need Project on:

Gordon Hamilton, Mob: 07952 765 302

e-mail: admin@theneedproject.co.uk

Website: www. <http://theneedproject.co.uk/>