

Need Project Report

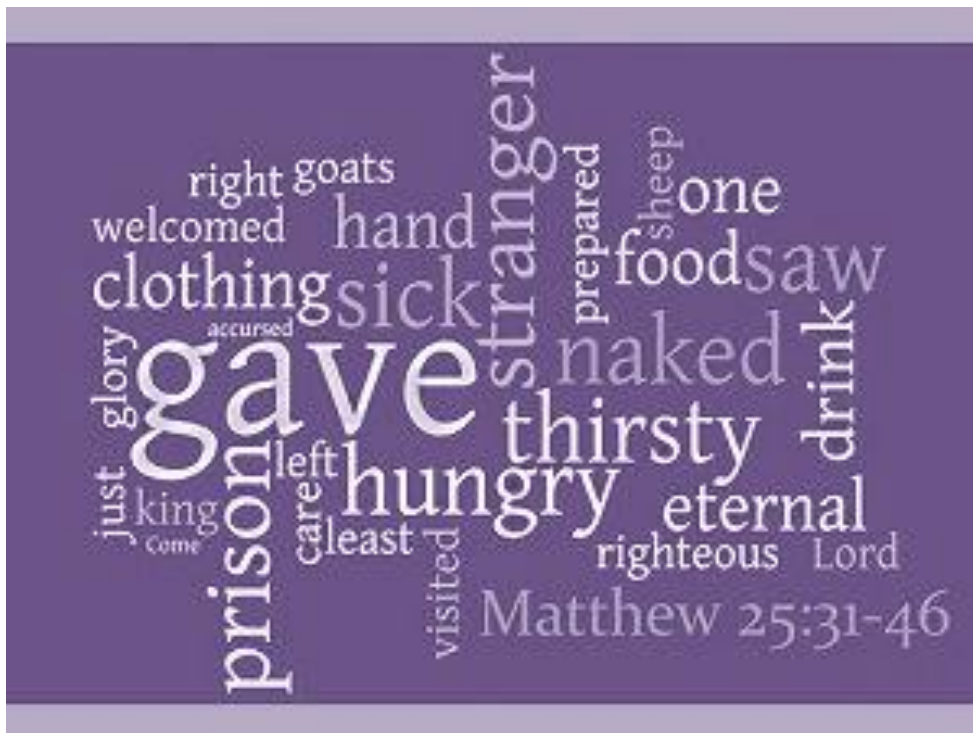
November 2014



"I was hungry and you gave me something to eat"

[Matthew 25:35]

Serving Jesus in His most distressing disguise



Purpose

This report has been compiled to provide our supporters and referral agencies an overview of the extent and growth rate of the project, and demonstrate the public benefits of this project

The information provided maintains our clients confidentially, but does reveal the shocking statistics on the levels of food poverty we with your support are seeking to address across our region.

Who we are

The Need Project Central Bedfordshire exists to provide a Christian response for people in our communities who are facing various situations of need.

The project is overseen as a Charitable Incorporated Organisation and run by members of four “hubs”; Kings Baptist Church Stotfold, Flitwick Baptist Church, Sandy Baptist Church and Shefford Baptist Church.

We respond to situations of need via confidential referrals processes from multiple agencies and care workers across central Bedfordshire.

All our delivery teams are DBS checked, approved by the leadership teams of the partner churches and have signed confidentiality agreements.

Our objectives

To relieve persons in Central Bedfordshire and the surrounding area that are in poverty or financial hardship in such ways as the Trustees from time to time think fit, in particular, but not exclusively by:

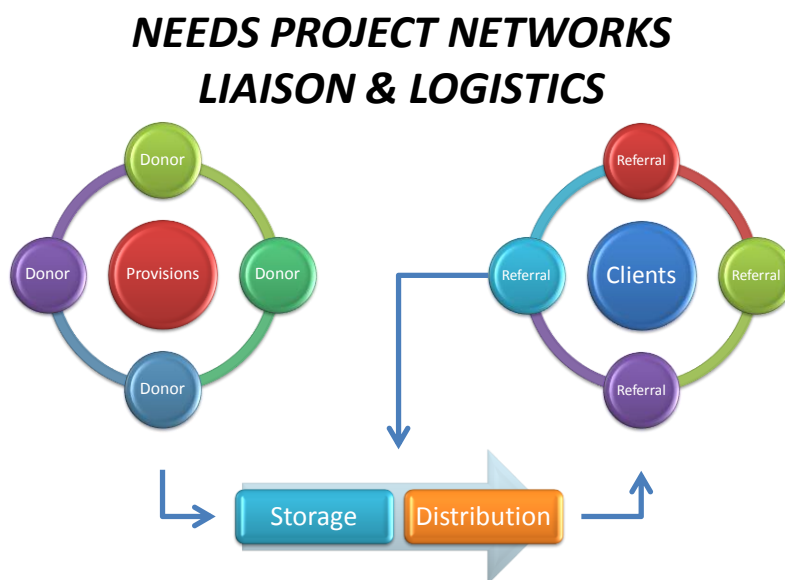
1. Providing food parcels to support individuals and families who are experiencing food deprivation.
2. Providing other items to meet immediate and essential needs, as resources allow.
3. Developing other forms of support to meet immediate need and alleviate financial hardship.

Our values

We are a Christian organisation motivated by Jesus' teaching on poverty and injustice. We operate according to Christian principles of compassion, honesty, integrity, openness, kindness and care of all people, regardless of backgrounds or beliefs (or none). We are passionate about inclusion and being non-judgemental is central to what we do. We believe that everyone has the right to have food on their plate, dignity, skills, a chance to work and hope for the future.

How we operate

The Need Project has a system of networks that have been developed as the project has grown. We rely on the network of donors who generously support the project with food and funds, and the network of care workers and agencies that connect us with hungry people who we bring your food too.



Hubs

We have four hubs in operation so far. The central hub is King's Baptist Stotfold where all the referrals come into and are logged and then sent out to the nearest local hub for action.

Discussions with the leaders of the Marston Vale church network is progressing, such that Lidlington and Marston churches are now delivering directly to clients in their communities.

Communities Served By Each Distribution Hub

Stotfold

Hub	Towns Covered	Σ 2013	2014 Data	Qty Parcels	% Total		
KBC	Arlesey	205		167	46.0%		
	Stotfold	128		111	30.8%		
	Letchworth	21		21	7.6%		
	Hitchin	22		18	6.0%		
	Stevenage	11		13	4.4%		
	Bedford	13		11	3.2%		
	Baldock	4		2	0.8%		
	Luton	1		1	0.4%		
	Kimpton	1		1	0.4%		
	Southhall	0		1	0.4%		
	Ickleford	4		0	0.0%		
	Kempston	3		0	0.0%		
	Tadlow	3		0	0.0%		
	Beeston	2		0	0.0%		
	Fairfield Park	1		0	0.0%		
	Royston	1		0	0.0%		
	Sharnbrook	0		0	0.0%		
	Average parcels per month this year				31.5		

Sandy

Hub	Towns Covered	Σ 2013	2014 Data	Qty Parcels	% Total		
SBC	Sandy	231		193			
	Biggleswade	92		100			
	Potton	10		37			
	Tempsford	12		9			
	Moggerhanger	26		8			
	Upper Caldecote	3		7			
	Wrestlingworth	2		6			
	Northill	1		5			
	Dunton	6		5			
	Everton	2		4			
	Gamlingay	2		4			
	Blunham	17		2			
	Sutton	1		1			
	Average parcels per month this year				34.3		

Flitwick

Hub	Towns Covered	£ 2013	2014 Data	Qty Parcels	% Total
FBC	Flitwick	40		64	18.3%
	Marston Moretaine	17		29	10.4%
	Dunstable	10		28	10.4%
	Amphill	28		26	8.7%
	Woburn	7		24	8.3%
	Lidlington	11		20	7.8%
	Collected by SW	28		18	4.8%
	Maulden	11		15	4.8%
	Clophill	4		15	4.3%
	Westoning	7		12	3.0%
	Houghton Conquest	5		12	3.0%
	Barton	2		10	3.0%
	Leighton Buzzard	2		10	3.0%
	Houghton Regis	7		9	2.6%
	Silsoe	4		7	2.6%
	Wilstead	15		7	1.3%
	Cranfield	8		7	1.3%
	Ridgemont	0		3	1.3%
	Toddington	2		3	1.3%
	Harlington	1		1	0.4%
	Haynes	4		1	0.4%
	Stewartby	1		0	0.0%
	Pulloxhill	0		0	0.0%
	Average parcels per month this year				28.5

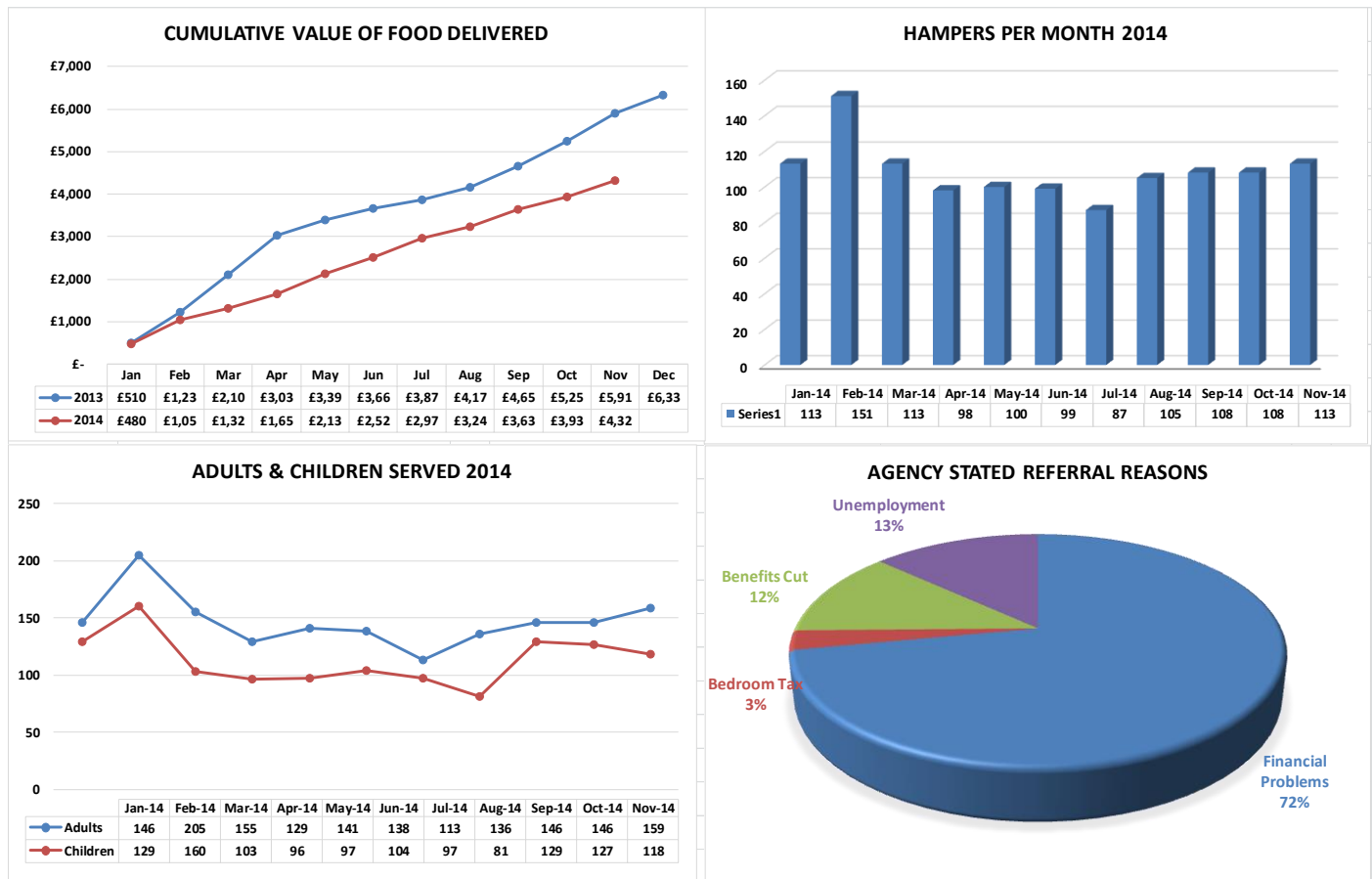
Shefford

Hub	Towns Covered	£ 2013	2014 Data	Qty Parcels	% Total		
ShBC	Shefford	119		94	67.6%		
	Lower Stondon	10		13	8.3%		
	Clifton	18		9	7.4%		
	Langford	29		8	4.6%		
	Henlow	15		8	4.6%		
	Shillington	6		7	3.7%		
	Gravenhurst	3		3	1.9%		
	Meppershall	7		1	0.9%		
	Campton	2		1	0.9%		
	Chicksands	2		0	0.0%		
	Average parcels per month this year				16.3		

Bedford Court [CBC LWP}

Cumulative: 15

Statistics



And by God's grace we also provided...

Bunk Beds x 1	Single Beds x 3
Mattresses x 4	Junior Bed & Mattress x 1
Cot Bed x 1	Bed Guard x 1
Duvets x 5	Pillows x 6
Sleeping Bag x 1	Microwaves x 2
Electric Cooker x 1	Washing Machine x1
Dining Tables x 2	Dining Chairs x 8
Sofas x 2	Arm Chairs x 2
Baby Clothes	Nappies x 100
Toasters x 2 + Kettle x1	Pots & Pans & Cutlery
Wardrobes, Chest of Drawers x 2	Coffee Table & Lamp

Also

We are very grateful to the many churches and schools and children's nurseries who donated food collected during harvest time, this will help us get ready for Christmas. Thank you.

Christmas Plans

To ensure we are ready for our busiest time of year, these are our key dates for Christmas Hampers

- All referrals in to the Project Office by Friday 12 December.
- Christmas hamper packing Monday 15 to Friday 19 December
- Deliveries to clients Friday 19 to Tuesday 23 December

Please note: these plans are in addition to our normal referrals process

Please pass this report on to anyone who would be interested in the work of the Need Project.

You can contact The Need Project on:

Gordon Hamilton, Mob: 07952 765 302

e-mail: admin@theneedproject.co.uk

Website: [www. http://theneedproject.co.uk/](http://theneedproject.co.uk/)